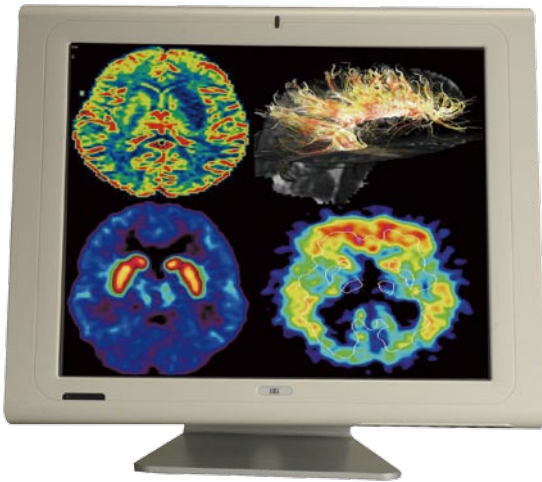
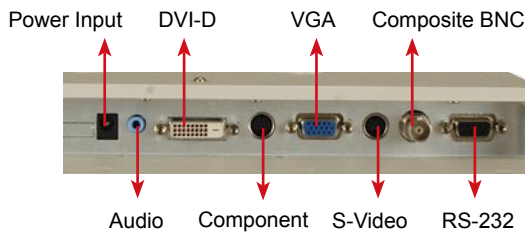


MMC-1170C/ MMC-1190C

1.3MP Versatile Clinical Review Color Display



- 17" & 19" color TFT LCD monitor
- Multiple video inputs for connection with various medical devices
- Auto-dimming function for optimized viewing conditions
- Remote control for easy monitor set up
- Picture-in-Picture display function
- Smart software OSD control utility
- Easy OSD keypad control
- Optional touch screen
- IP 64 waterproof and dustproof front bezel



• Component Extend Cable • Component Cable (Component to RCA) • VGA Cable (VGA to BNC) • Component Cable (Component to BNC)



Your Best Display Terminal for Various Modalities

Multiple video interfaces on the versatile MMC-1170C and MMC-1190C enable these systems to be interfaced with VGA, DVI, S-Video, Component and BNC displays. Adjustable color temperature settings make the MMC-1170C and the MMC-1190C perfect for endoscope applications. These systems are also easily interfaced to other advanced medical applications such as ultrasound devices and the 800:1 high-contrast ratio makes them perfect for viewing C-arm images.

Perfect Image Viewing Terminal

Multiple Color Temperature Settings

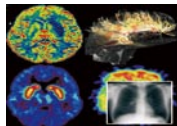
A wide range of color temperatures are included in the MMC-1170C and MMC-1190C, including 4200K/5000K/6500K/ 7500K/9300K. The easy color temperature adjustment ensure the best display quality when viewing images from different modalities. modalities

Picture-in-Picture Function

PIP function enables a second images viewed in a small on-screen window. The optional Picture-outside-picture can be implemented for image comparison.

*Flexible PIP settings:

- Upper left/right and lower left/right of window's position
- Small, medium and large on-screen windows setting
- Independent brightness and contrast control for PIP windows



Auto-Dimming Function

The built-in ambient light sensor ensures the monitors perform optimally in all light conditions. The auto-dimming function extends backlight life time and provides comfortable viewing environment.



Flexible Control Advantage

Smart OSD Utility

The smartOSD is an intelligent On-Screen Display control. The user-friendly OSD interface under Windows environment enables users to adjust the monitor easily from a remote system.

The smartOSD allows some functions as below:

- Power on/off
- Luminance selection
- Graphic card mode selection
- Gamma selection
- Monitor information



Full-Function Remote Control Utility

Hot keys on the remote control include PIP zone, input source Selection, auto-dimming, brightness and contrast ratio. Remote control ensures easy configuration of the MMC-1170C/1190C.



Best Product Reliability

IP 64 Compliance

The IP 64 front panel is waterproof and dustproof, ensuring the best product reliability.

Paint-coating-free front bezel

The front bezel is no paint coating, enabling easy cleaning by disinfectant without harming the front bezel.

Specifications

Model	MMC-1170C	MMC-1190C
LCD size(inch)	17"	19"
Resolution	1280x1024	
Brightness (cd/m ²)	300	
Contrast Ratio	800: 1 (typical)	
Pixel Pitch (mm)	0.294(H) x 0.294(V)	
Viewing Angle	160°(H) / 160°(V)	
Touch Screen (optional)	Optional resistive 5-wire (RS-232 interface)	
Input Video Signal Connector	1 x Composite (NTSC/PAL) 1 x Component (YPbPr) 1 x S-Video 1 x VGA 1 x DVI-D	
Remote Control	Auto-dimming & IR remote control function	
Speakers	2 x 1~3W AMP	
OSD Function	7 x buttons (On/off, Auto, Left, Up, Down, Right, Menu)	
LED Function	1 x LED on Front Panel for Power on/off	
Power In	DC 12V in	
Power Adapter	Medical Grade, AC 110V~240V to DC 12V	
IP Level	IP 64	
Physical Dimensions (mm) (W x H x D)	428 x 350 x 65	469.94 x 382.46 x 67
Operation Temperature	0°C~40°C	
Storage Temperature	-20°C~60°C	
Safety & EMI	UL60601-1 , EN60601-1 , CCC , CE(EN60601-1-2) , FCC Part 18	
Preset Gamma	Gamma 2.2	
Packing List	Power cord (1 x EU, 1 x US) 1 x Power adapter 1 x User manual & Diver CD 1 x Remote control 1 x Screw set 1 x DVI cable 1 x VGA cable (DB-15 to DB-15) 1 x VGA cable (DB-15 to BNC) 1 x Component cable (Mini Dim to BNC) 1 x Component cable (Mini Dim to RCA) 1 x Touch panel RS-232 cable /Touch pen Driver CD (WT-R model only)	
Optional Mounting Kit	Wall mount kit: AFLWK-19 ARM: ARM-11-RS, ARM-31-RS STAND: STAND-A19, STAND-B19	

Ordering Information

Part No.	Description
MMC-1170C	1.3 mega pixel, 17" color medical monitor
MMC-1170C/WT-R	1.3 mega pixel, 17" color medical monitor with touch screen RS-232 interface
MMC-1190C	1.3 mega pixel ,19" color medical monitor
MMC-1190C/WT-R	1.3 mega pixel, 19" color medical monitor with touch screen RS-232 interface



Headquarters

IEI Technology Corp.

TEL : +886-2-8691-6798 FAX : +886-2-6616-0028
sales@pacsmate.com www.pacsmate.com
No. 29, Jhongsing Rd., Sijhih City, Taipei County, 221, Taiwan

America-United States

IEI Technology USA Corp.

TEL : +1-909-595-2819 Fax: +1-909-595-2816
sales@pacsmate.com www.pacsmate.com
168 University Parkway, Pomona, CA 91768

China

IEI Technology (Shanghai) Co.,Ltd.

TEL :+86-21-3462-7799 FAX : +86-21-3462-7798
sales@pacsmate.com www.pacsmate.com
3F., No.1728, Yi-Shan Road, Min-Hang, Shanghai, China